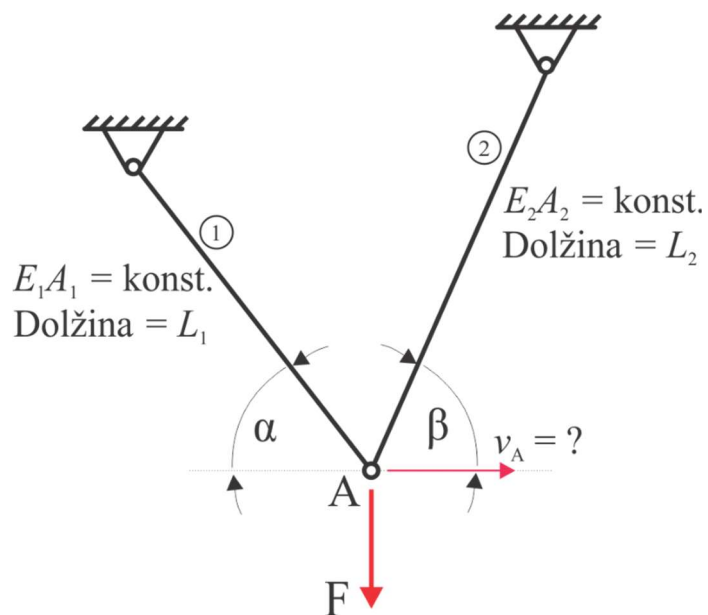


Dodatna naloga 7

Z uporabo principa virtualnega dela določite izraz za izračun horizontalnega premika členka A v narisanim paličju.



Rešitev:

$$v_A = \frac{F}{(\tan \alpha \cos \beta + \sin \beta)^2} \left(\frac{L_1}{E_1 A_1} \frac{\cos \beta \sin \beta}{\cos^2 \alpha} - \frac{L_2}{E_2 A_2} \tan \alpha \right)$$

ali nekoliko bolj urejeno:

$$v_A = \frac{F}{\sin^2(\alpha + \beta)} \left(\frac{L_1}{E_1 A_1} \cos \beta \sin \beta - \frac{L_2}{E_2 A_2} \cos \alpha \sin \alpha \right)$$